

Petite Homes

www.petite.homes



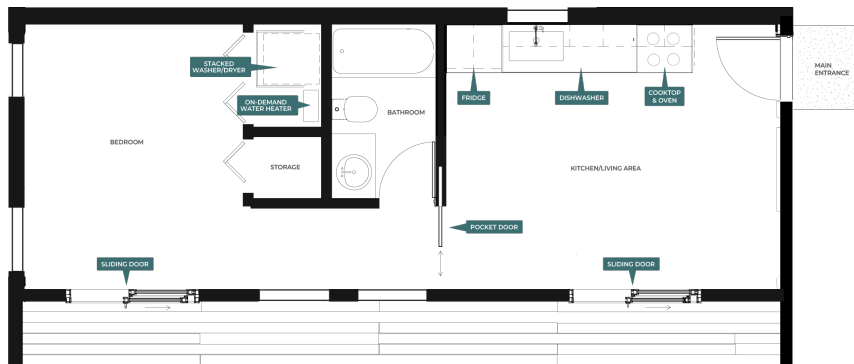
The Bachelor Plus Pre-Fab

560 sqft ADU

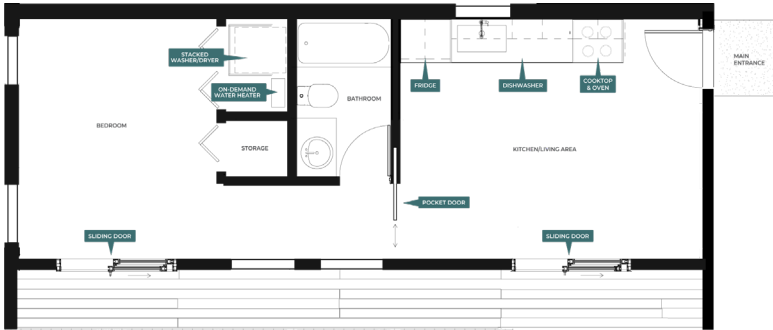


Introducing The Bachelor Plus Pre-Fab: comfortable, minimalist living with a small footprint.

With its clean lines, modern design, and sloped roof, The Bachelor Plus Pre-Fab effortlessly blends aesthetics with functionality to create a harmonious living space. Offering 560 square feet of living area, a separate bedroom area, and double sliding doors to bring in plenty of natural light, The Bachelor Plus is a cost-effective way to add additional family space, to downsize for retirement, or to increase your rental income.



TO LEARN MORE OR TO CHECK YOUR PROPERTY'S ELIGIBILITY:
519-253-40 00 | hello@petite.homes | www.petite.homes



Exterior Dimensions: 35'W x 16'D X 10'2"H



The Bachelor Plus Pre-Fab: Contractor-Ready or Move-In Ready

1 kitchen/living + 1 bedroom + 1 bath | 560 sqft | 1 story

We understand that some property owners already have a full team of contractors ready to go, and others don't. That's why we offer The Bachelor Plus Pre-Fab in three models, depending on your needs.

One, Two, Three Ways to Build

SHELL

Factory-built Shell
On-Site Delivery
Installed on Your Foundation
Your Contractors Finish the Build

FOUNDATION

Factory-built and Delivered
Install of Concrete Foundation
Municipal Building Permits
Your Contractors Finish the Build

COMPLETE

Factory-built and Delivered
Install of Concrete Foundation
Utility Connections & Permits
Interior Fit & Finish
Heating / Air Conditioning

For current pricing, please visit www.petite.homes

Factory shell includes interior super structure, painted exterior siding, exterior doors, windows, metal roof, and decking. Furniture packages, appliance packages, and custom interior design options are available.

TO LEARN MORE OR TO CHECK YOUR PROPERTY'S ELIGIBILITY:
519-253-4000 | hello@petite.homes | www.petite.homes