



The Shasta

3 bedroom + 2 bath | 1,299 sqft | 1 story

The Shasta is inspired by the coastal homes of Northern California. Featuring beautiful NanaWall Folding Glass Door Systems, tall windows, and abundant skylights, The Shasta seamlessly blends indoor and outdoor spaces. The Shasta's high vaulted ceilings, open-concept kitchen and great room, 3 bedrooms, and 2 full baths make this spacious home feel even more so with ample space to comfortably retire or raise a family.



Specifications

3 bedroom + 2 bath

1,299 sqft / 1 story

49'-10" L x 24'-4.5" W x 14'-6" H

Wood or Metal construction

4'-0" shallow pour concrete foundation

Ceiling height varies from 13'-3" at vault to 9'0"
in spare bedrooms and bathrooms

Build Price

Starting at \$550,000



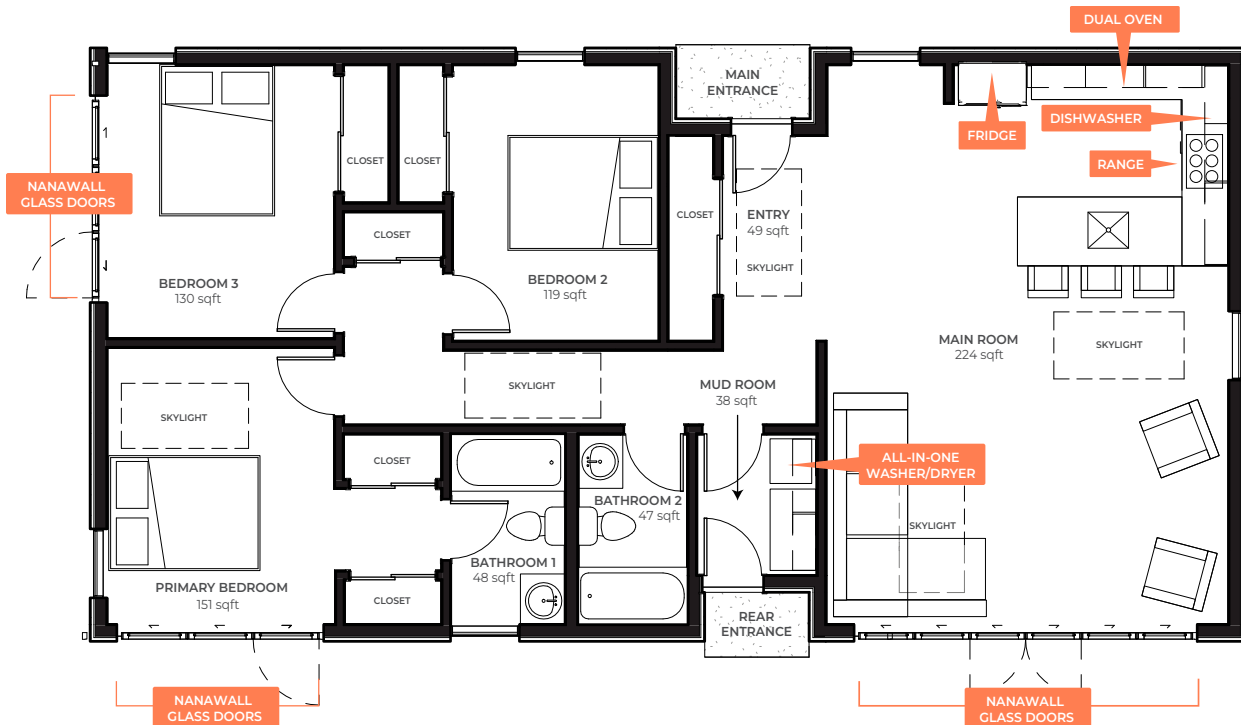
TO LEARN MORE OR TO CHECK YOUR PROPERTY'S ELIGIBILITY:
519-253-4000 | hello@petite.homes | www.petite.homes



The Shasta: Designed around You

3 bedroom + 2 bath | 1,299 sqft | 1 story

Petite Homes offers customizable interior design services to tailor your home to your preferences. Our team collaborates with you on site selection, orienting the home, and ensuring the best views are captured through the large, featured NanaWall Folding Glass Door Systems.



TO LEARN MORE OR TO CHECK YOUR PROPERTY'S ELIGIBILITY:
519-253-4000 | hello@petite.homes | www.petite.homes

Appliances not included.

Petite Homes

www.petite.homes

The Shasta: Example Pricing



SECIFICATIONS

3 bedroom + 2 bath

1,299 sqft / 1 story

49'-10" L x 24'-4.5" W x 14'-6" H

Wood or Metal construction

4'-0" shallow pour concrete foundation

Ceiling heights from 13'-3" at vault to 9'0" in spare bedrooms and bathrooms

REBATES & INCENTIVES

Up to \$50,000 through MHRTC Tax Credits

FINANCING AVAILABLE

Financing is available and payment schedules are worked out with each client on an individual basis.

BASE PRICE*

| | |
|------------------|-----------|
| The Shasta | \$550,000 |
| Permit fees | INCLUDED |
| Site plan | INCLUDED |
| Development fees | N/A |

UTILITY CONNECTION COSTS*

(Illustrative pricing only. Actual prices vary by lot size)

| | |
|--------------------------------|----------|
| Electrical Service Connection | \$3,950 |
| Sanitary Sewer Connection | \$9,800 |
| Water Line Connection | \$5,200 |
| Total Utility Connection Costs | \$18,950 |

EXTRAS*

(Illustrative pricing only. Each build is custom and options vary by customer.)

| | |
|-------------------|----------|
| Concrete Driveway | \$20,000 |
| Total Extras | \$20,000 |

TOTAL BEFORE TAXES \$588,950



TO LEARN MORE OR TO CHECK YOUR PROPERTY'S ELIGIBILITY:
519-253-4000 | hello@petite.homes | www.petite.homes

*Costs and income potential figures are estimates only as of the time of printing. Actual costs and values determined by market. Appliances shown for illustration purposes only.

Petite Homes

www.petite.homes

The Shasta: Designed around You

3 bedroom + 2 bath | 1,299 sqft | 1 story



The Shasta is designed to blend inside and outside space. Combining skylights and full-panel glass doors, it brings in plenty of natural light. The open concept kitchen and living area combined with 3 bedrooms and 2 baths leaves plenty of room for retirement or to raise a family. Plus, our licensed interior designer will work with you to customize your Shasta so that it feels...well, just like home.



TO LEARN MORE OR TO CHECK YOUR PROPERTY'S ELIGIBILITY:
519-253-4000 | hello@petite.homes | www.petite.homes